



100%  
Customizable



Stackable Planks



Quick Deployment

## HYDRODEFENSE® FLOOD PLANK XL (FP-535)

FOR FLOOD PROTECTION ON LARGE OPENINGS, THE BEST DEFENSE IS HYDRODEFENSE®

The HydroDefense® Flood Plank XL (FP-535) from PS Flood Barriers™ is the most dependable way to protect large openings like driveways, loading docks, storefronts, retaining walls and full building perimeters from the advance of flood water. Specifically engineered to protect extra-large openings, the HydroDefense system is custom built using our proprietary flood planks, also known as stop logs, to address your distinct flood vulnerabilities. The HydroDefense Flood Plank XL is stored away from your opening, providing the perfect solution when you need protection in place only at the time of flooding.

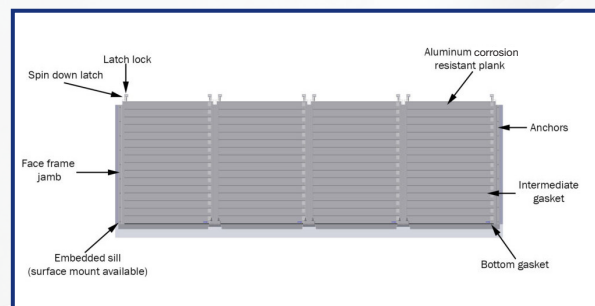
### EASY DEPLOYMENT

- No sealant required on planks during deployment – watertight protection that deploys quickly without mess or dry time
- Identical flood planks of symmetrical shape allow for quick assembly because planks fit either way
- Easy-grip construction makes part handling simpler and safer
- Fewer pieces to track mean less stress during assembly
- Easy-to-replace seal can be changed in the field in minutes



### KEEPS WATER OUTSIDE WHERE IT BELONGS

- Rugged extruded-aluminum planks and durable gaskets are tested to withstand the rigors and unpredictable nature of flooding
- Components are engineered to integrate together to form a structural watertight wall
- Rugged T-Lock seal is mechanically locked in place



### CUSTOMIZABLE, ADJUSTABLE AND SAFE – HYDRODEFENSE MAKES MORE SENSE

- 100% customizable to meet virtually any building or large area opening requirements
- Unique spin-down latches enable walls to be set up with varying heights (instead of all or nothing)
- Lockable spin-down latches allow the deployed barrier to lock in place
- Affordable replacement seals make it easier to keep a well-maintained flood solution

#### Ask About Our Other Flood Barriers For Large Openings:



Self-closing  
Flood Barrier



Vertical Lift  
Flood Barrier



Sliding  
Flood Barrier

701.746.4519 | 877.446.1519 | [www.psfloodbarriers.com](http://www.psfloodbarriers.com) | [4psinfo@psindustries.com](mailto:4psinfo@psindustries.com)

## STANDARD TECHNICAL DATA

### MATERIAL:

- **Flood Planks and Frame:** 6000 series aluminum alloy
- **Seal:** UV Resistant EPDM (High-grade material)
- **Installation:** To be installed to structural walls, typically concrete or masonry
- **Floor Surface:** Seals to existing floor surface or optional embedded steel sill
- **Mullions:** Removable mullions create a sectional barrier of any length

### HARDWARE:

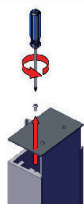
- Spin-down compression latches with security locking

### PERFORMANCE RATING:

- Tested to the American National Standard for Flood Abatement Equipment, ANSI/FM 2510 2014, section 4.3.3, for water protection up to 12 feet

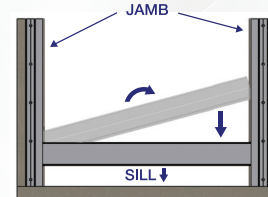
### DEPLOYMENT INSTRUCTIONS:

**Step 1.** Remove cover assembly from jambs and spray jamb seals with a water-soap mixture.



**Step 2.** Install the plank that is labeled “Bottom Plank” first. This plank is unique and the gaskets have been factory sealed to ensure a watertight junction with the sill.

- Place one corner of the bottom plank into the jamb.
- Angle the opposite end of the plank upward until it clears the opposite jamb.
- Slide the plank into the jamb, taking care to not tear the jamb gasket.
- Level plank and slide down.
- Center the plank between the jambs and ensure that the plank fully overlaps both jamb gaskets.



**Step 3.** Install the intermediate planks in the same manner as the bottom plank, ensuring that each plank is fully seated onto the plank below. If this is not achieved, lift and re-seat the plank on the plank below before continuing.

**Step 4.** Install latching, making certain to tighten both latch sides evenly to compress planks uniformly. Tighten latch bolts to a torque of 100 in.-lb. To ensure that the gaskets are compressed uniformly, measure from the floor to the top plank on both ends. These dimensions are required to be within 1/4" of each other. Use of supplied latch-lock is optional but recommended in locations where tampering of the HydroDefense™ Flood Plank Wall System is prevalent.

