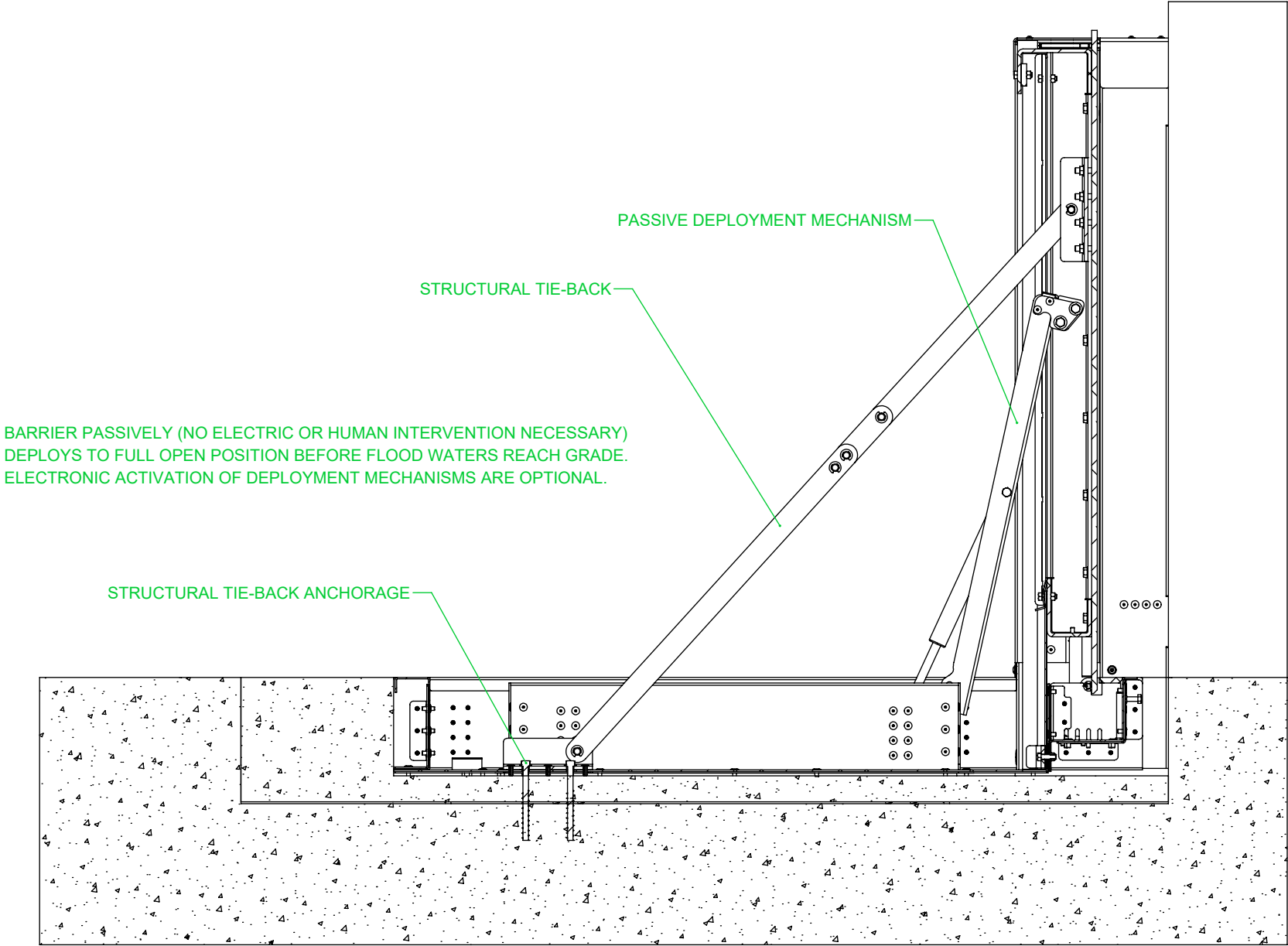


SIDE ELEVATION SECTION VIEW - BARRIER IN DEPLOYED POSITION

WET SIDE

DRY SIDE

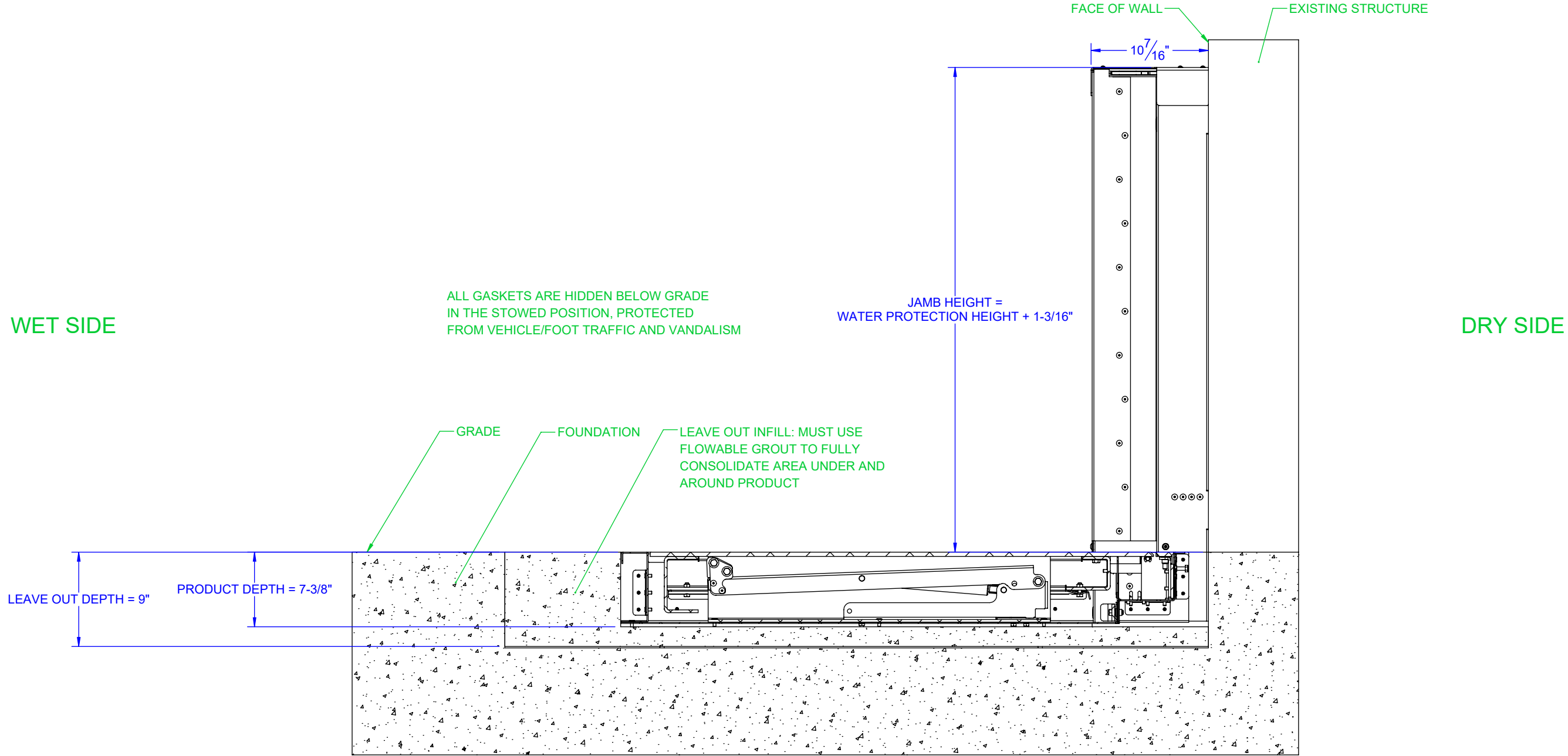


BARRIER PASSIVELY (NO ELECTRIC OR HUMAN INTERVENTION NECESSARY) DEPLOYS TO FULL OPEN POSITION BEFORE FLOOD WATERS REACH GRADE. ELECTRONIC ACTIVATION OF DEPLOYMENT MECHANISMS ARE OPTIONAL.

PROJECT NAME:	PART: BH590	DATE:
WORK ORDER:	DESCRIPTION: AquaTrigger® Automatic Flip-Up Barrier	SCALE:
SALES ORDER:	REVISION:	DWG BY:
SERIAL NUMBER:	ESTIMATED WEIGHT:	CHECKED:
PROPRIETARY AND CONFIDENTIAL DRAWINGS ARE EXCLUSIVE PROPERTY OF PS INDUSTRIES INCORPORATED AND CANNOT BE USED IN WHOLE OR PART WITHOUT WRITTEN CONSENT © 2024 PS INDUSTRIES INCORPORATED ALL RIGHTS RESERVED		DWG #:
		SHEET #: 1 OF 5



SIDE ELEVATION SECTION VIEW - BARRIER IN STOWED POSITION

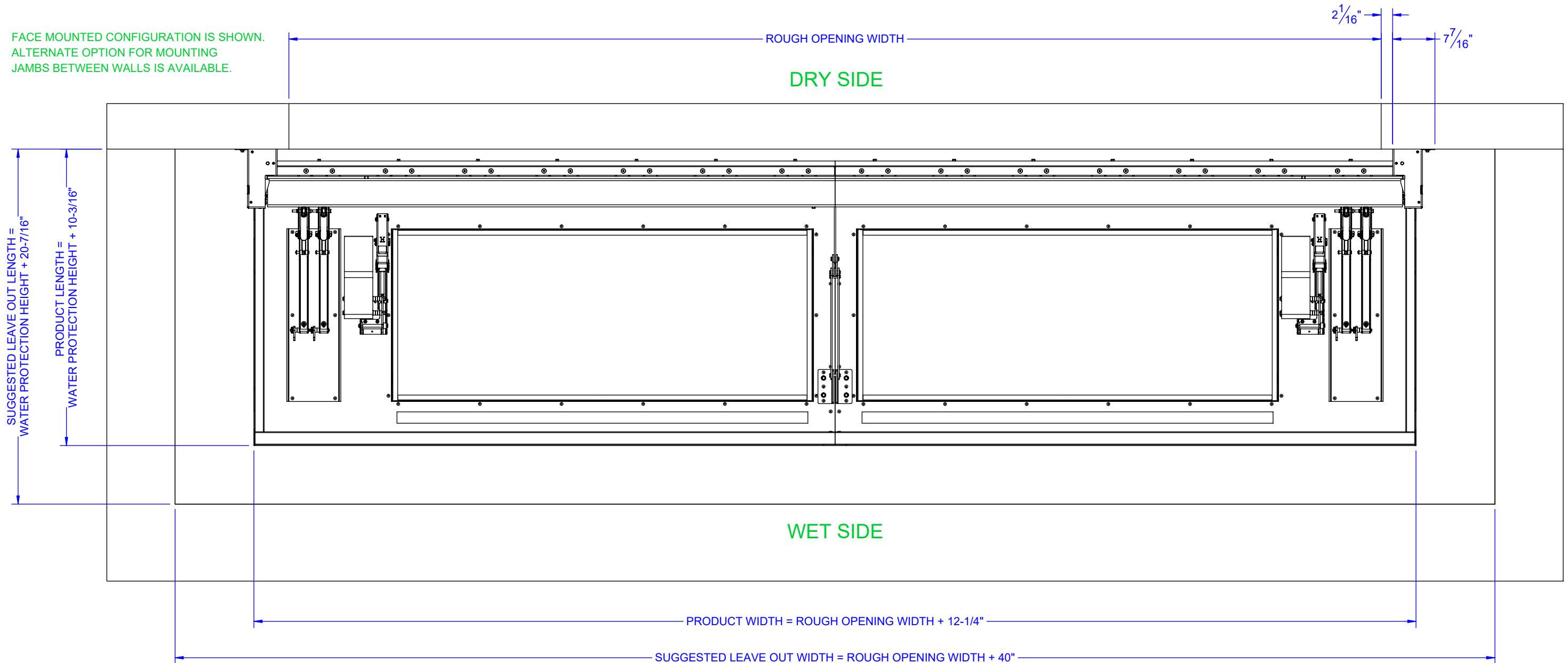


DIMENSIONS SHOWN ARE TYPICAL AND SUBJECT TO CHANGE BASED ON PROJECT REQUIREMENTS

PROJECT NAME:	PART: BH590	DATE:	<p>Access Solutions™ Safety Access™ Flood Barriers™ Public Protection™ 1150 48th St. S GRAND FORKS, ND 58201 PH: 701-746-4519 FAX: 701-746-8340</p>
WORK ORDER:	DESCRIPTION: AquaTrigger® Automatic Flip-Up Barrier	SCALE:	
SALES ORDER:	REVISION:	DWG BY:	
SERIAL NUMBER:	ESTIMATED WEIGHT:	CHECKED:	
PROPRIETARY AND CONFIDENTIAL DRAWINGS ARE EXCLUSIVE PROPERTY OF PS INDUSTRIES INCORPORATED AND CANNOT BE USED IN WHOLE OR PART WITHOUT WRITTEN CONSENT © 2024 PS INDUSTRIES INCORPORATED ALL RIGHTS RESERVED		DWG #:	
		SHEET #: 2 OF 5	

PLAN VIEW - BARRIER IN DEPLOYED POSITION

FACE MOUNTED CONFIGURATION IS SHOWN.
ALTERNATE OPTION FOR MOUNTING
JAMBS BETWEEN WALLS IS AVAILABLE.



DIMENSIONS SHOWN ARE TYPICAL AND SUBJECT TO CHANGE BASED ON PROJECT REQUIREMENTS

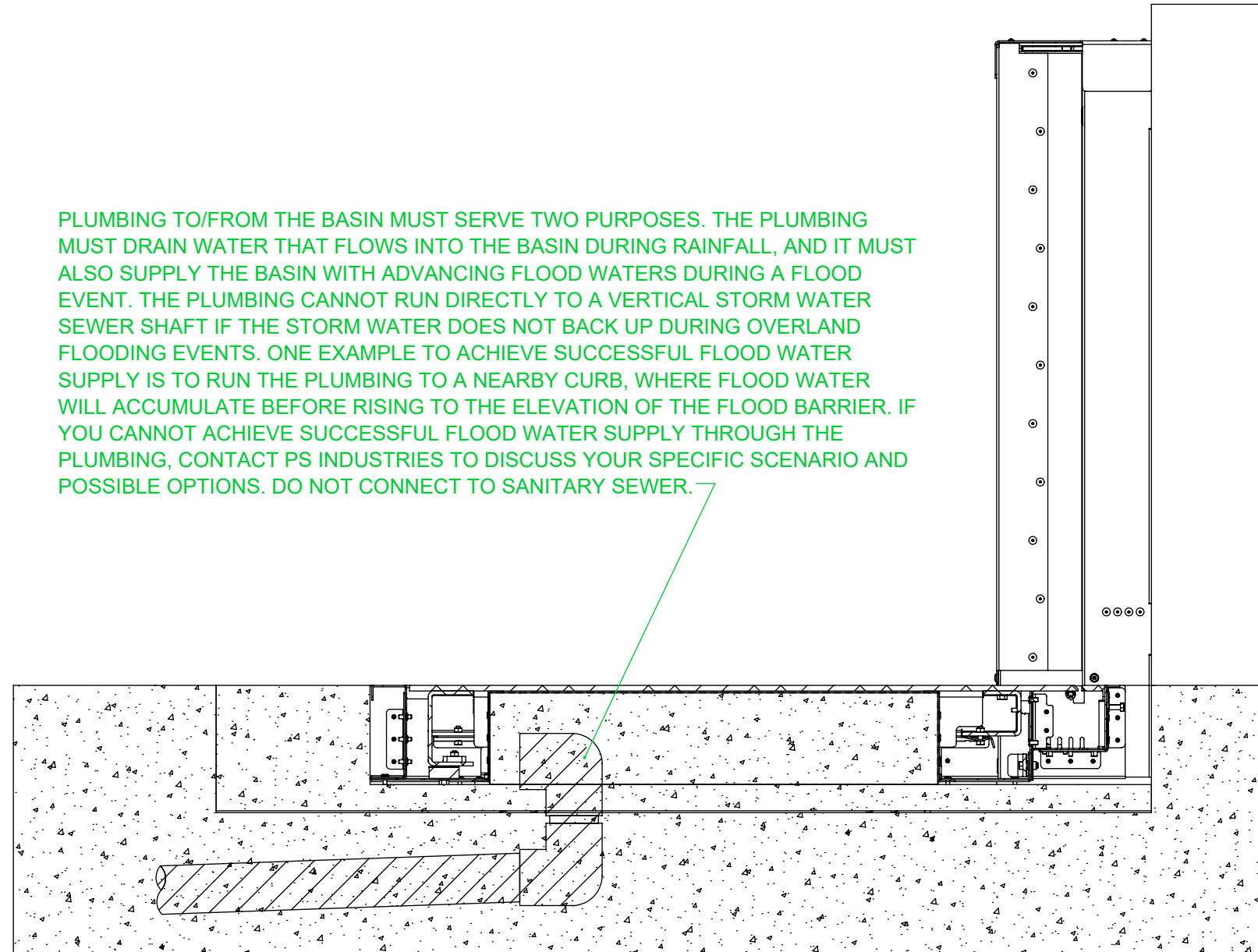
PROJECT NAME:	MODEL: BH590	DATE:	
WORK ORDER:	DESCRIPTION: AquaTrigger @Automatic Flip-Up Barrier	SCALE:	
SALES ORDER:	REVISION:	DWG BY:	
SERIAL NUMBER:	ESTIMATED WEIGHT:	CHECKED:	
PROPRIETARY AND CONFIDENTIAL DRAWINGS ARE EXCLUSIVE PROPERTY OF PS INDUSTRIES INCORPORATED AND CANNOT BE USED IN WHOLE OR PART WITHOUT WRITTEN CONSENT © 2024 PS INDUSTRIES INCORPORATED ALL RIGHTS RESERVED		DWG #:	
		SHEET #: 3 OF 5	

SIDE ELEVATION SECTION VIEW - FLOOD WATER SUPPLY / DRAINAGE

WET SIDE

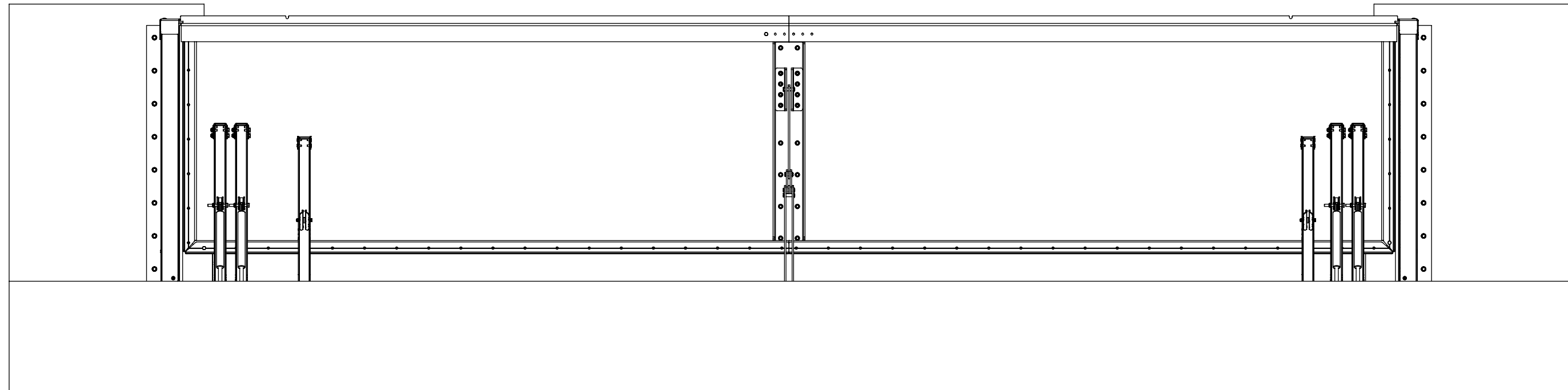
PLUMBING TO/FROM THE BASIN MUST SERVE TWO PURPOSES. THE PLUMBING MUST DRAIN WATER THAT FLOWS INTO THE BASIN DURING RAINFALL, AND IT MUST ALSO SUPPLY THE BASIN WITH ADVANCING FLOOD WATERS DURING A FLOOD EVENT. THE PLUMBING CANNOT RUN DIRECTLY TO A VERTICAL STORM WATER SEWER SHAFT IF THE STORM WATER DOES NOT BACK UP DURING OVERLAND FLOODING EVENTS. ONE EXAMPLE TO ACHIEVE SUCCESSFUL FLOOD WATER SUPPLY IS TO RUN THE PLUMBING TO A NEARBY CURB, WHERE FLOOD WATER WILL ACCUMULATE BEFORE RISING TO THE ELEVATION OF THE FLOOD BARRIER. IF YOU CANNOT ACHIEVE SUCCESSFUL FLOOD WATER SUPPLY THROUGH THE PLUMBING, CONTACT PS INDUSTRIES TO DISCUSS YOUR SPECIFIC SCENARIO AND POSSIBLE OPTIONS. DO NOT CONNECT TO SANITARY SEWER.

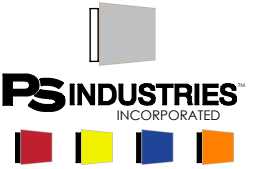
DRY SIDE



PROJECT NAME:	PART: BH590	DATE:	<p>Access Solutions™ Safety Access™ Flood Barriers™ Public Protection™ 1150 48th St. S GRAND FORKS, ND 58201 PH: 701-746-4519 FAX: 701-746-8340</p>
WORK ORDER:	DESCRIPTION: AquaTrigger @Automatic Flip-Up Barrier	SCALE:	
SALES ORDER:	REVISION:	DWG BY:	
SERIAL NUMBER:	ESTIMATED WEIGHT:	CHECKED:	
PROPRIETARY AND CONFIDENTIAL DRAWINGS ARE EXCLUSIVE PROPERTY OF PS INDUSTRIES INCORPORATED AND CANNOT BE USED IN WHOLE OR PART WITHOUT WRITTEN CONSENT © 2024 PS INDUSTRIES INCORPORATED ALL RIGHTS RESERVED		DWG #:	
		SHEET #: 4 OF 5	

FRONT ELEVATION VIEW - BARRIER IN DEPLOYED POSITION



PROJECT NAME:	PART: BH590	DATE:	 <small>Access Solutions™ Safety Access™ Flood Barriers™ Public Protection™</small> <small>1150 48th St. S GRAND FORKS, ND 58201 PH: 701-746-4519 FAX 701-746-8340</small>
WORK ORDER:	DESCRIPTION: AquaTrigger ®Automatic Flip-Up Barrier	SCALE:	
SALES ORDER:	REVISION:	DWG BY:	
SERIAL NUMBER:	ESTIMATED WEIGHT:	CHECKED:	
<small>PROPRIETARY AND CONFIDENTIAL DRAWINGS ARE EXCLUSIVE PROPERTY OF PS INDUSTRIES INCORPORATED AND CANNOT BE USED IN WHOLE OR PART WITHOUT WRITTEN CONSENT © 2024 PS INDUSTRIES INCORPORATED ALL RIGHTS RESERVED</small>		DWG #:	
		SHEET #: 5 OF 5	